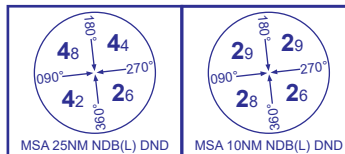
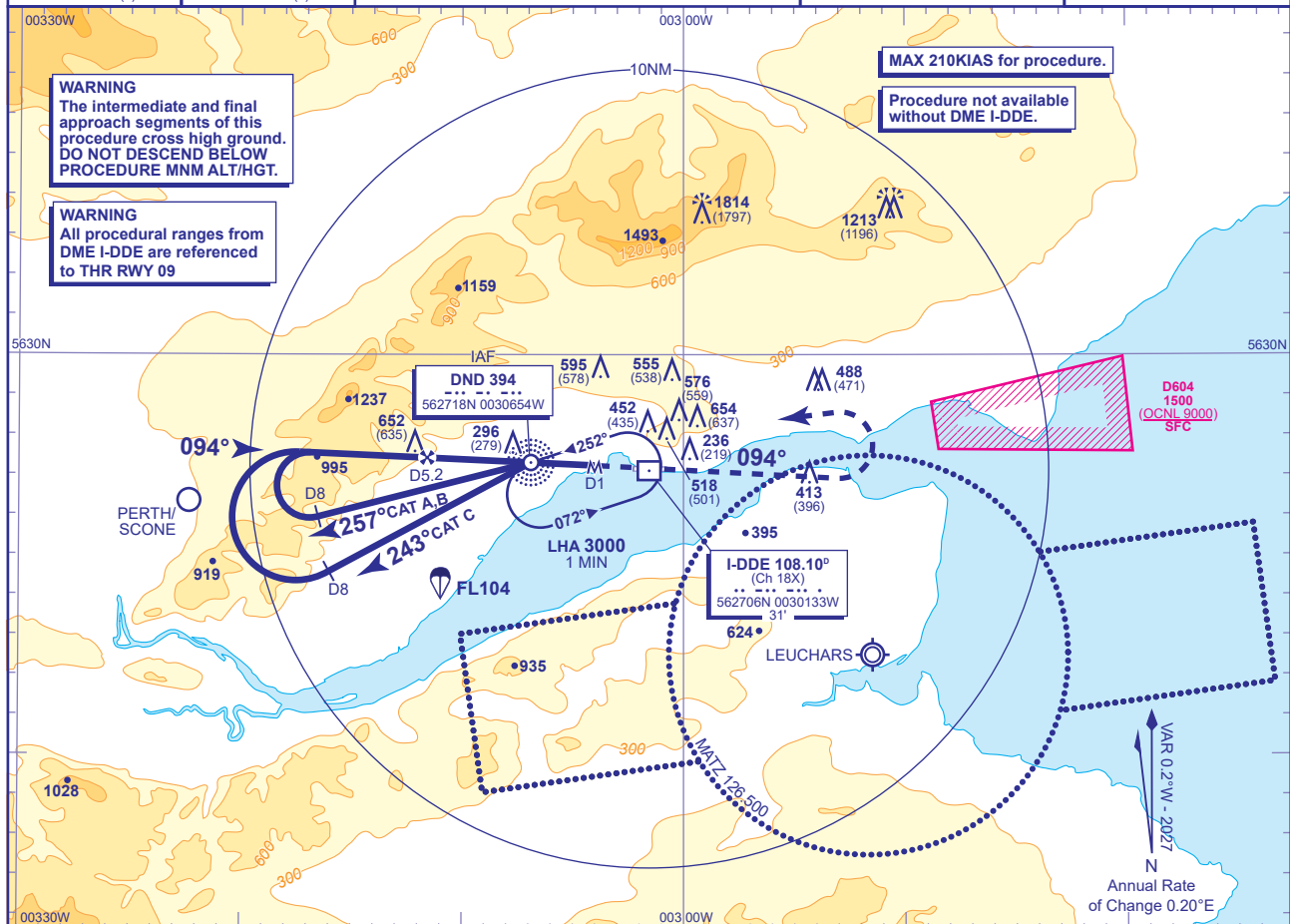


**DUNDEE**  
**NDB(L)/DME**  
**RWY 09**  
(ACFT CAT A,B,C)



APP	122.905	DUNDEE APPROACH	AD ELEVATION	17
TWR	122.905	DUNDEE TOWER	THR ELEVATION	17
ATIS	119.330	DUNDEE INFORMATION	OBSTACLE ELEVATION <b>1814 AMSL</b> (1797) (ABOVE THR)	
			BEARINGS ARE MAGNETIC	

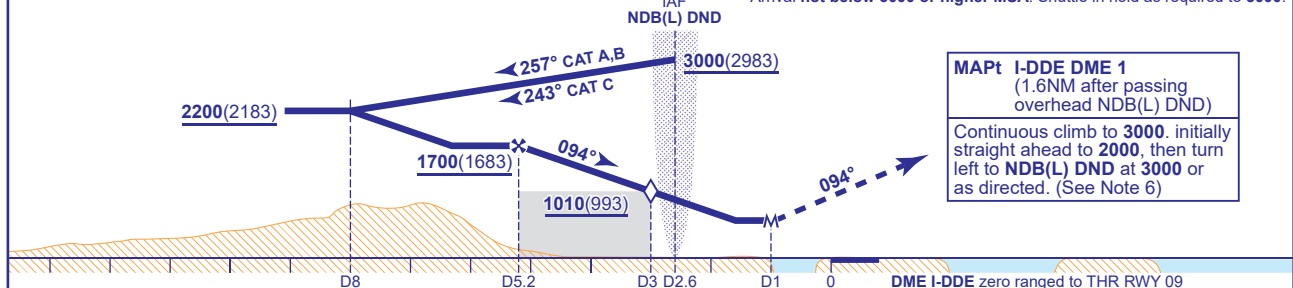
TRANSITION ALTITUDE  
3000



**RECOMMENDED PROFILE** Gradient 5.2%, 316FT/NM

<b>DME I-DDE</b>	<b>5</b>	<b>4</b>	<b>3 (SDF)</b>	<b>2.6 (NDB(L) DND)</b>	<b>2</b>
<b>ALT(HGT)</b>	<b>1640(1623)</b>	<b>1320(1303)</b>	<b>1010(993)</b>	<b>880(863)</b>	<b>690(673)</b>

Arrival not below 3000 or higher MSA. Shuttle in hold as required to 3000.



Aircraft Category		A	B	C	Rate of descent	G/S KT	160	140	120	100	80
OCA (OCH)	Procedure	570(553)	570(553)	610(593)		FT/MIN	840	740	630	530	420
VM(C)OCA (OCH AAL)	Total Area	970(953)	970(953)	1170(1153)							
	South of RWY 09/27	540(523)	750(733)	1080(1063)							

**NOTE 1** Subject to ATC approval, when inbound to NDB(L) DND and within I-DDE DME 10, aircraft may descend to **3000**.

2 NDB(L) DND is 2.6NM from THR RWY 09 and is offset 230M north of extended RWY C/L.

3 FAT is offset 3° from RWY C/L.

4 The Category C Instrument Approach Procedure infringes the Perth ATZ at 1800FT above Perth aerodrome elevation. Pilots must notify ATC of their intention to conduct a Category C approach on first contact.

5 The eastern edge of the perth ATZ lies 9.5NM west of THR RWY 09. To prevent conflict with possible VFR traffic in the Perth ATZ, pilots should not extend the outbound leg of the base turn beyond the prescribed procedural distances.

6 EGD604 is 7NM east of Dundee ARP. If it appears likely that during the standard missed approach above, low performance aircraft will infringe EGD604 then such aircraft should turn right at I-DDE DME 4 onto track 135°M and climb to **2000**(1983) before turning right to return to NDB(L) DND at **3000**. Pilots should advise ATC on turning onto 135°M and expect to change to Leuchars Approach when instructed for radar assistance.

CHANGE (4/26): MAG INFO REVISED. MAG HEADINGS.